

Each time I sit to write this welcome, we enjoy another milestone - so before my message takes up the entire newsletter, I'm sending this out today.

If your podcast, book or magazine targets rural, regional and remote Australian listeners and readers, then we have the room for you, with our latest to open in The Homestead Hub being [Podcasts and Publications](#).

Another exciting website addition is our [Positions Vacant](#) page; a place for listed Members to advertise available positions, and for job seekers to find work opportunities, Australia wide.

Our first social event for The Homestead Hub was a gathering at the Broome races in June. Members and guests from across the country came together, not only to meet, network and punt at one of the most picturesque racetracks in Australia, but to go home with what has been hailed one of the best gift bags ever - filled with goodies from fellow Members of The Homestead Hub.

Honouring our commitment to Beyond Blue, several businesses listed with The Homestead Hub have been hosting Big Blue Table events across the country during October, and we couldn't be more proud.



In this Bush Telegraph we proudly profile one of our Top of the Range Members, [Air Kimberley](#) - who in addition to tourism, provides essential services, supplying remote communities and outback stations across Western Australia and the Northern Territory.

Enjoy the read and don't forget to click into The Homestead Hub.

Felicity x

AT THE RACES WITH THH

20 Members and guests enjoyed our first social event for The Homestead Hub - a day at the Broome races, Saturday 18th June.

From Buladelah, NSW, Darwin, NT, Parwan, VIC, Frankland River, Jurien Bay and Broome; even Faversham, Kent, UK.



Taryn (Taryn Yeates Photography), Toni (Social Project), Felicity (The Homestead Hub & Hats by Felicity), Emma (Black Stump Gallery)



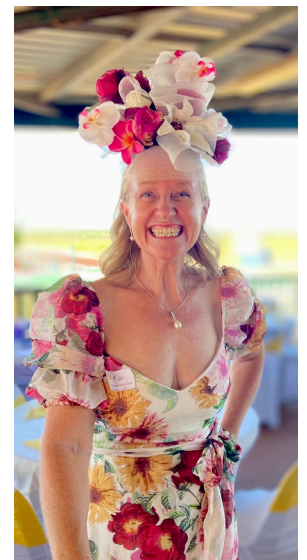
Taryn (Taryn Yeates Photography), Giles (Giles Tipping - Ray White Broome)



Kerstin (CWD Builders Developers, Marianna (Broome Dental Clinic), Tracey (To the Ninth and Beyond)



Hilary (KAS Helicopters) & Connie



Flic (The Homestead Hub & Hats by Felicity)



*For unforgettable scenic
adventure flights exploring
Australia's remote Northwest*

'Connecting Australia's Northwest through our diverse charter and tourism operations is essential in supporting community. With our impeccable customer service, our clients are always guaranteed safe, efficient, and professional air services,' says Owner, Ash Munn.

Ash grew up in Sale, rural Victoria, close to the East Sale RAAF base. From an early age he dreamt of becoming a pilot. 'I started my pilot's licence when I was fifteen and did my first solo flight on my sixteenth birthday,' says Ash. Since gaining his licence Ash worked as a pilot as well as in the tourism and hospitality industry gaining key business management skills as an Executive Hotel Manager – but he never imagined owning his own aviation company.

Based in Broome, Air Kimberley first took to the skies back in 1992 as King Leopold Air, a small charter company based on a pastoral station close to its namesake – the spectacular King Leopold Ranges. Throughout the years, as the company expanded, King Leopold Air moved its operational base to Broome, the Western gateway to the Kimberley and the pearling capital of Australia.

In early 2018, Ash and his partner Jensen purchased the company. Ash and Jensen, both being long-time local aviation and tourism professionals and pilots, took on the business with plans to regenerate, renew and expand its operations. In just a short few years the company grew exponentially and developed into an award-winning and highly reputable tour and transport operator.

In July 2020, the iconic King Leopold Ranges were renamed to the Wunaamin Miliwundi Ranges, honouring the Indigenous custodians of the land shedding the name of the former Belgian ruler responsible for brutal oppression and enslavement of African people. Of course, the company name no longer reflected the values of the business and Air Kimberley was born.

'Operating all year round, our highly experienced pilots are additionally trained as tour guides to provide a comprehensive and informative insight into the stunning



Kimberley landscape. In collaboration with our tour partners, Air Kimberley offers a diverse and unique choice of tour itineraries which include air, land, and sea safari tours with authentic on country experiences visiting many Kimberley destinations,' explains Ash.

In addition to Air Kimberley's tourism operations, they provide essential services and supply remote communities and outback stations across Western Australia and the Northern Territory. Their customers include tourists, aerial photographers, special-interest and corporate and government clients.

When asked what his strongest influences and proudest achievements were Ash responded, 'The most influential people in my life have been the people closest to me. My parents have always backed me all the way. Growing up they inspired us to achieve and taught myself and my siblings a strong work ethic – be kind, humble, aim high, work hard and value your relationships.'

'I'm proud of the skills I have learnt and the relationships I have built throughout my professional life – they have all contributed to my success and ability to own and operate Air Kimberley – a reputable and successful company. This has certainly been myself and Jensen's greatest and proudest achievement. One thing most people don't know about me is that I speak fluent French having lived in France for 5 years – I'm passionate about the French language, food and culture.'



Connecting Rural and Regional Australia

When asked about the trends and challenges to aviation industry, Ash responded, 'The world is changing so fast. Rising costs in regulation, fuel, maintenance, and aircraft manufacturing is our greatest challenge – Air Kimberley needs to continue to be forward thinking and innovative, with exceptional cost control measures to ensure viability and longevity without compromising safety.'

'Since purchasing the business in 2018 Air Kimberley has seen a continuous increase in spending on air travel for education transportation, health and medical transportation (largely due to the COVID-19 pandemic), mining charter operations, and increased use of air transportation for tourism. The current and future trend is associated with growing technological advancements in the industry and an increasing awareness of aircraft emissions which will have a significant impact on our future operations as we move to a more sustainable way of flying. Demand for air transport will continue to increase over the next five years. I believe the spotlight will be increased discussions and use of sustainable aviation fuel and a push for Aviation companies to promote and encourage eco-friendly operations with a long-term goal of achieving net zero emissions.'

When asked what advice Ash would give someone thinking about a job in aviation, he responded, 'My advice to anyone thinking about a job in aviation would be, don't rush to the airlines like most young pilots do these days. Spend time gaining experience by flying in remote regions of Australia, these will be some of your best flying years. The more you put into aviation, the more you will receive in return. Work hard and always strive to improve, this will give you the opportunity to build a successful career as well as to meet life-long friends and make precious memories along the way.'

Flying with Air Kimberley is an educational journey of discovery. You will explore ancient cultures, beautiful landscapes and stunning natural attractions. With exceptional customer service, great value for money with a few little surprises along the way, flying with Air Kimberley will be an unforgettable experience.



[CLICK HERE](#) to visit Air Kimberley on The Homestead Hub; send them a message via the contact form on their page and like and follow their socials.



Members and guests of The Homestead Hub took part in the inaugural Big Blue Table – the national fundraising initiative for Beyond Blue's 24/7 support services. In Broome we hosted a dinner for 31 guests, at Wild Flower restaurant.

Members from across the country donated prizes to raffle on the night, and we raised an impressive \$2,070 for the cause.



Patrina (Life and Soul Fitness), Felicity & Hayley (Life and Soul Fitness)



Allison, Sharni, Tim and Taryn (Taryn Yeates Photography)



Kerstin (CWD Builders Developers), Rob, Tracey, Felicity & Patches (CWD Builders Developers)



Michael & Leanne Brown, Karl & Simone Kapiteyn (Adventure Wild Kimberley Tours)



Jessica, Lucy, Kimmie (Kimmie Designs), Trish & Kelly



Felicity (The Homestead Hub/Hats by Felicity) & Amanda (Dahlia Designs)

SUBSCRIBE TO OUR NEWSLETTER
CLICK HERE TO JOIN OUR MAILING LIST

Connecting Rural and Regional Australia

www.thehomesteadhub.com.au



OUR SUPPLIERS

We are extremely proud to showcase and welcome these new suppliers listed with The Homestead Hub.

Our Top of the Range and Classic listed businesses hail from around the country, with products, services and experiences for rural, regional and remote Australia.

Anna Hastie **ARTIGIANA**



THE SHEKKI SHED
AN AUSTRALIAN INSPIRED BOUTIQUE

[CLICK HERE](#)

to visit these business pages; send them a message via the contact form on their page and like and follow their social media.

PLEASE SHARE

the *Bush Telegraph* far and wide

To customers who will enjoy The Homestead Hub website, and suppliers who may be interested in listing. The pre requisite – a genuine understanding of customers from regional Australia.

UPCOMING REGIONAL EVENTS

SCULPTURE AT ACHERON

Within the Land 2023

Calling for ARTIST SUBMISSIONS

Application forms & details www.littleriverwines.com.au/events

EASTER WEEKEND to ANZAC DAY Friday 7th - Tuesday 25th April

10.00 am - 4.30pm Friday - Sunday or by appointment.

Litsea cafe & gallery

Opening Night Cocktail Party Tuesday 6th April - 6.00pm

BOOKINGS ESSENTIAL via Eventbrite - \$25.00pp - Exhibitors free

Music by *Solomon & Nancy*

Marian - marian@marianrennie.com.au - P.0412 109 129

Challen - challen.tunstall@bigpond.com - P.03 5774 7644

SCULPTURE AT ACHERON - WITHIN THE LAND

Easter Weekend and Anzac Weekend 2023,
10am - 4.00 pm weekends

Sculpture at Acheron is an exciting artistic event showcasing sculpture in Marian Rennie's historic 2 acre rural garden and we are very excited to once again be holding it in COVID SAFE CONDITION

DO YOU HAVE AN
UPCOMING EVENT
THAT YOU'D LIKE TO LIST?

[CLICK HERE TO
CONTACT US TODAY!](#)



BECOME A
SUPPLIER
[CLICK HERE TO
REGISTER YOUR INTEREST](#)



Proudly supporting

**Beyond
Blue**

1 300 22 4636

beyondblue.org.au/getsupport

DONATE TODAY

SUBSCRIBE TO OUR NEWSLETTER
[CLICK HERE TO JOIN OUR MAILING LIST](#)

Connecting Rural and Regional Australia

www.thehomesteadhub.com.au

